

FREQUENCY TRANSDUCER

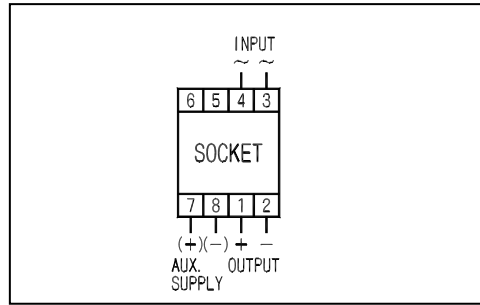
FTP2 - □□□□

CONSTANT VOLTAGE/CURRENT OUTPUT TYPE



FTP2-11F1
(80 × 50 × 123mm/500g)

Connection diagram



Features

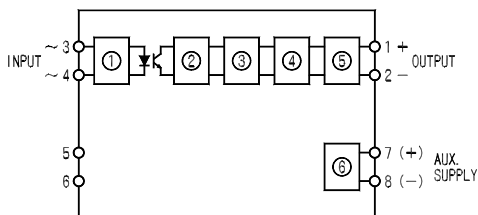
1. Constant voltage/current output
2. Withstand voltage between input, output, auxiliary supply and outer case (earth) is AC2, 000V (50/60Hz), complete insulation for 1 minute.
3. Impulse withstands voltage 5kV, 1.2/50µs (between electric circuit and outer case), and positive/ negative polarity 3 times each is guaranteed.

Specification

Input	Rating	Output (load resistance)	Auxiliary supply	Common specification
① :45-55Hz ② :55-65Hz ③ :45-65Hz ④ :other than those above	① : AC110V ± 10% ② : AC220V ± 10% ④ : other than those above	① : DC0-100mV (200) ② : DC0-1V (200) ③ : DC0-5V (1k) ④ : DC 0-10V (2k) ⑤ : DC1-5V (1k) ⑥ : DC0-1mA (10k) ⑦ : DC0-5mA (2k) ⑧ : DC0-10mA (1k) ⑨ : DC0-16mA (600) ⑩ : DC1-5mA (3k) ⑪ : DC4-20mA (750) ⑫ : other than those above	① : AC100V±10%, 50/60Hz ② : AC110V±10%, 50/60Hz ③ : AC200V±10%, 50/60Hz ④ : AC220V±10%, 50/60Hz ⑤ : DC24V±10% ⑥ : other than those above	Tolerance: ± 0.5% Response time: 0.5sec/90% Consumption VA: Input: 0.7VA(110V) 1.4VA(220V) AC power source:3VA DC power source:3.5W Weight: AC power source:500g DC power source:400g
		⑬ : DC4-20mA (800) DC1-5V (250k) With output switching function	① : AC100V+10%, -15% 50/60Hz ② : AC110V+10%, -15% 50/60Hz ③ : AC200V+10%, -15% 50/60Hz ④ : AC220V+10%, -15% 50/60Hz ⑤ : DC24V+10%, -15%	

Open of current output: even if the current output terminal is used in a state of regular open, there is no problem. Also, a voltage of approx. 25V occurs on the output terminal.

Block diagram



- Input circuit
- Pulse conversion DC circuit
- Output circuit
- Monostable detecting circuit
- Smoothing circuit
- Insulated power source circuit

Purchase specifications

